

INTERNET | TELEPHONE | CABLE TV

# LOS ANGELES

CONVENTION CENTER

# EXHIBITOR ORDERING GUIDE

YOUR ROADMAP TO  
A SUCCESSFUL EVENT



© 2022 SMART CITY NETWORKS. ALL RIGHTS RESERVED. EFFECTIVE JULY 20, 2022 - DECEMBER 31, 2023 V072022

# Where TECHNOLOGY Meets HOSPITALITY

## EXPERTISE

WE HAVE DESIGNED & INSTALLED  
**MORE NETWORKS**  
FOR MAJOR TRADESHOWS  
THAN ANY OTHER ORGANIZATION

### FIRST CLASS CUSTOMER SERVICE

Leading up to the start of your event, our **customer service team** will **work with you** to ensure all the required information needed to install services is collected prior to your arrival. These items include; verifying your order, providing all pertinent IP and wireless information, collecting a floor plan, advanced payment, and confirmation of all required signatures. We understand **there are a lot of moving parts** when planning to exhibit at a convention and our mission to make this process as easy as possible.

It's our goal to make our team as accessible as possible. All our events are staffed with local team members for you to utilize, helping **ensure network reliability and the delivery of the services you need**. During move-in and show days, our team is available to assist you with your ordered services.

### KNOWLEDGEABLE TECHNICAL SUPPORT

Our experienced technicians are **readily available** to perform troubleshooting, installation of additional services, relocations and much more.

Our team will be available **throughout the entire event** to provide you with the show experience you've always envisioned.

### REDUNDANCY OF EQUIPMENT

We always have spares on-hand and are network ready. Smart City always keeps network switches and wireless access points on-hand and connected to the network. If a piece of equipment fails, we can replace it immediately with **little to no downtime**.

### 24/7 NETWORK MONITORING

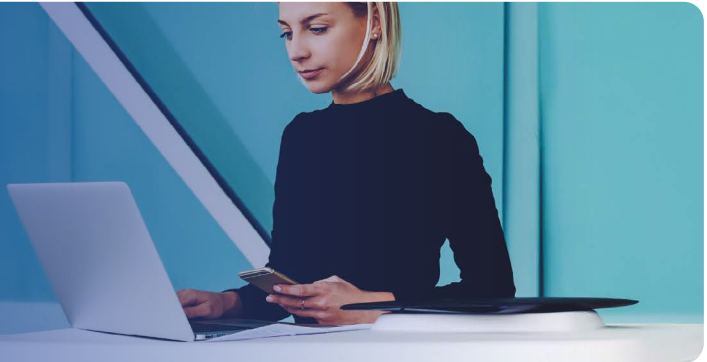
All ports on the Smart City network are **polled every minute** for **network stability**. Certified network engineers are on staff in our Network Operations Center during event hours and on call 24/7.





Is the exclusive provider of the following services:

**INTERNET**



**TELEPHONE**



**CABLE TV**





# Need just a **BASIC** CONNECTION?

Our **BASIC INTERNET SERVICE**, ideal for  
**LIGHT INTERNET USAGE** such as  
web browsing and checking email via a wired connection.

SERVICE	INCENTIVE **	BASE	ON-SITE
Basic Internet	<b>\$895</b>	\$1,140	\$1,368
Additional Device	<b>\$185</b>	\$220	\$255
EQUIPMENT & LABOR	INCENTIVE **	BASE	ON-SITE
Switch Rental	<b>\$185</b>	\$225	\$270
Patch Cables	<b>\$50</b>	\$62	\$74
Labor (Floor Work)	<b>\$125</b>	\$125	\$125

\* **NOT FOR STREAMING**

\*\* **ORDER 21 DAYS PRIOR TO FIRST DAY OF MOVE-IN TO GET THE INCENTIVE RATE!**

**Basic Internet Includes:**

- 1.54 Mbps burstable to 3 Mbps per device
- Routers are not permitted on this service and will not work
- Each device includes (1) Private IP Address
- Up to 4 additional IPs [devices] may be purchased separately
- Ethernet RJ45 Hardline drop and is DHCP (plug and play)

To connect multiple devices to this service a Switch Rental, Patch Cables and Floor Work are required. If more than 5 devices are needed, another main drop (Basic Internet w/ 1 Private IP) is required. An additional 4 devices can then be added to your order. A maximum of 10 devices in one location is permitted.

ORDER NOW



Order online at:  
[orders.smartcitynetworks.com](https://orders.smartcitynetworks.com)  
or call 888.446.6911

# What if it's **MISSION CRITICAL?**

Our **DEDICATED WIRED SERVICES** are the  
**FASTEST AND MOST RELIABLE** way  
to deliver high quality experiences at your event.

DEDICATED SERVICES	STREAMING			INCENTIVE *	BASE	ON-SITE
	SD or	HD or	UHD			
3 Mbps Dedicated	1	N/A	N/A	<b>\$3,495</b>	\$4,370	\$5,244
6 Mbps Dedicated	2	1	N/A	<b>\$5,900</b>	\$7,375	\$8,850
10 Mbps Dedicated	3	2	N/A	<b>\$7,850</b>	\$9,810	\$11,772
15 Mbps Dedicated	5	3	N/A	<b>\$11,700</b>	\$14,630	\$17,556
25 Mbps Dedicated	6	4	1	<b>\$19,250</b>	\$24,060	\$28,872

**\* ORDER 21 DAYS PRIOR TO FIRST DAY OF MOVE-IN TO GET THE INCENTIVE RATE!**

Whether you are setting up your own booth Wi-Fi, Webcasting, HD Streaming, Gaming or require Point to Point connectivity, Dedicated Internet is the way to go!

**Dedicated Services Include:**

- Ethernet (1) RJ45 Hardline drop with VLAN
- **Wireless and Hardline routers are permitted**
- (5) Static Public IP addresses
- Speeds up to 1 Gbps available
- Additional Static IP addresses available for purchase

ORDER NOW >



Order online at:  
[orders.smartcitynetworks.com](https://orders.smartcitynetworks.com)  
or call 888.446.6911

© 2022 SMART CITY NETWORKS. ALL RIGHTS RESERVED. EFFECTIVE JULY 20, 2022 - DECEMBER 31, 2023 V072022

# NEED WIRELESS CONNECTIVITY?



Our **STANDARD HOTSPOT** provides  
**SIMPLE & SECURE WIRELESS**  
connectivity ideal for checking emails, browsing the web,  
processing payments, and light website demonstrations.

STANDARD HOTSPOT PROVIDES 3 Mbps BURSTABLE TO 5 Mbps PER DEVICE*			
DEVICE LIMIT	INCENTIVE**	BASE	ON-SITE
5 Device Limit	<b>\$2,339</b>	\$2,807	\$3,368
15 Device Limit	<b>\$4,133</b>	\$4,960	\$5,952
30 Device Limit	<b>\$6,762</b>	\$8,114	\$9,737
Additional Access Point Rental	<b>\$750</b>	\$750	\$750

\* **NOT FOR STREAMING.**

\*\* **ORDER 21 DAYS PRIOR TO FIRST DAY OF MOVE-IN TO GET THE INCENTIVE RATE!**

All Hotspots broadcast on the **5 Ghz frequency only** and include:

- (1) Custom network name or SSID
- (1) Password (8 character minimum)
- (1) Access Point - booth size may require additional Access Point rental

ORDER NOW >



Order online at:  
[orders.smartcitynetworks.com](https://orders.smartcitynetworks.com)  
or call 888.446.6911



[orders.smartcitynetworks.com/wifi-splash-page-design](https://orders.smartcitynetworks.com/wifi-splash-page-design)

# WILL YOUR BOOTH DEMO BRING OUT THE MASSES?

Our **PREMIUM HOTSPOT** combines  
**HIGH BANDWIDTH WIRELESS**  
with greater flexibility and customization options that generate  
smoother product demos, quicker remote connectivity and superior  
video streaming quality.

PREMIUM HOTSPOTS ARE NOT RATE LIMITED PER DEVICE							
BANDWIDTH ALLOCATION	STREAMING			INCENTIVE*	BASE	ON-SITE	
	SD	or HD	or UHD				
10 Mbps	3	N/A	N/A	<b>\$8,800</b>	\$10,560	\$12,672	
20 Mbps	6	4	N/A	<b>\$16,600</b>	\$19,920	\$23,904	
30 Mbps	10	6	1	<b>\$24,200</b>	\$29,040	\$34,848	
40 Mbps	13	8	1	<b>\$31,550</b>	\$37,860	\$45,434	
50 Mbps	16	10	2	<b>\$39,050</b>	\$46,860	\$56,232	
Additional Access Point Rental	N/A	N/A	N/A	<b>\$750</b>	\$750	\$750	

**\*ORDER 21 DAYS PRIOR TO FIRST DAY OF MOVE-IN TO GET THE INCENTIVE RATE!**

All Hotspots broadcast on the **5 Ghz frequency only** and include:

- (1) Custom network name or SSID
- (1) Password (8 character minimum)
- (1) Access Point - booth size may require additional Access Point rental

ORDER NOW 



Order online at:  
[orders.smartcitynetworks.com](https://orders.smartcitynetworks.com)  
or call 888.446.6911



[orders.smartcitynetworks.com/wifi-splash-page-design](https://orders.smartcitynetworks.com/wifi-splash-page-design)

© 2022 SMART CITY NETWORKS. ALL RIGHTS RESERVED. EFFECTIVE JULY 20, 2022 - DECEMBER 31, 2023 V072022



# NEED TELEPHONE OR CONFERENCE SERVICES?

Our **TELEPHONE SERVICES** provide reliable **VOICE SERVICE** solutions for Single Line, Multi Line, and Conference calls.

VOICE SERVICES	INCENTIVE*	BASE	ON-SITE
Single Line Telephone - With or Without Device	<b>\$275</b>	\$345	\$414
Multi Line Telephone	<b>\$415</b>	\$520	\$624
Polycom Speaker Phone	<b>\$465</b>	\$575	\$690

**\*ORDER 21 DAYS PRIOR TO FIRST DAY OF MOVE-IN TO GET THE INCENTIVE RATE!**

We have specialized in telephone services for over 30 years. Smart City provides reliable phone services with crystal clear connections. Our telephone services can be used for reception check-in, conference calls in meeting rooms and for credit card processing machines.

**Telephone Service Information:**

- Multi Line telephones include (1) Main number and (1) rollover line
- Polycom speakerphones require power source, **electrical** services may need to be ordered separately
- Domestic Long Distance is included
- International calling is billed separately

ORDER NOW >



Order online at:  
[orders.smartcitynetworks.com](https://orders.smartcitynetworks.com)  
or call 888.446.6911

© 2022 SMART CITY NETWORKS. ALL RIGHTS RESERVED. EFFECTIVE JULY 20, 2022 - DECEMBER 31, 2023 V072022



# NEED CABLE TV SERVICES?



Smart City Networks is the exclusive provider of **CABLE TV SERVICES**. Visit our online ordering site to learn more.

Our cable services deliver high-definition channels with clear and crisp picture quality to satisfy even the most discerning of viewers.

**\*ORDER 21 DAYS PRIOR TO FIRST DAY OF MOVE-IN TO GET THE INCENTIVE RATE!**

**\*\*Cable services may require a deposit in some locations.**

ORDER NOW



Order online at:  
[orders.smartcitynetworks.com](https://orders.smartcitynetworks.com)  
or call 888.446.6911

© 2022 SMART CITY NETWORKS. ALL RIGHTS RESERVED. EFFECTIVE JULY 20, 2022 - DECEMBER 31, 2023 V072022

# FAQ

## Frequently Asked Questions

### DOES SMART CITY NETWORKS PROVIDE COMPLIMENTARY WI-FI?

Yes! Smart City Networks provides complimentary Wi-Fi in most designated public areas of the facility, such as the concourse lobbies and food courts. Check with your specific venue for locations. This service is made available to approximately 30 million guests, visitors, and attendees at our convention centers throughout the country. There is no requirement to purchase a Smart City Networks service in order to take advantage of the complimentary Wi-Fi.

### WHY DOESN'T SMART CITY NETWORKS PROVIDE COMPLIMENTARY WI-FI IN THE EXHIBIT HALLS?

Exhibit halls are not public areas since this space is typically licensed to a company, government agency, or trade association for a private event. The space license agreement governs the availability of a range of services for the event and the license may or may not call for complimentary Wi-Fi services.

### WILL MY PERSONAL HOTSPOT (MI-FI) WORK IN YOUR BUILDING?

Yes – however, the capability of your personal mobile hotspot is limited by your cellular carrier by the spectrum and Internet bandwidth capacity they have made available. Cellular carrier signals penetrate into a facility either from a nearby cellular tower or via an in-building Distributed Antenna System (DAS). It is important to remember that your personal mobile hotspot is obtaining a wireless signal from a shared cellular network, so service may be disrupted or become unreliable due to user density and demand on the carrier's network. In all cases, you have the option to take advantage of the complimentary Wi-Fi throughout the public areas, or if you choose, you can purchase an upgraded package based on your service requirements.

### WHAT MUST BE IDENTIFIED ON MY FLOORPLANS?

Floor plans should include the surrounding booth numbers for orientation, measurements and easy identification of all required end location(s). Be sure to distinguish your main distribution line (MDL) and additional patch cables. Please reference Smart City's Communications Floorplan Worksheet.

**TIP:** Most of our venue's data jacks originate from a floor pocket. Be sure to submit a completed floorplan prior to the first day show move-in to avoid any additional labor charges.



Order online at:  
[orders.smartcitynetworks.com](https://orders.smartcitynetworks.com)  
or call 888.446.6911

© 2022 SMART CITY NETWORKS. ALL RIGHTS RESERVED. EFFECTIVE JULY 20, 2022 - DECEMBER 31, 2023 V072022

### DO YOU OFFER INCENTIVE RATES?

Yes! Orders received along with payment by the incentive deadline date will receive our early incentive pricing.

### WHY ARE ROUTERS NOT ALLOWED ON A SHARED NETWORK?

Many times, Smart City has found that routers on a shared network are installed incorrectly, which can cause problems for other users of the network. Additionally, an accurate count of the number of devices on the network is required to determine the appropriate network size and bandwidth available to the network. For more information and to request the build-out of a special system to meet your needs, contact our team today for a quote.

### CAN I PROVIDE MY OWN SWITCH AND/OR CABLING?

Yes, you can provide your own switch and patch cables for in booth cabling. Unless otherwise mandated by the venue.

**Please Note:** Connectivity can be guaranteed only to the point where Smart City Networks' services originate in the booth. Smart City Networks cannot guarantee service on customer/exhibitor-provided cable(s) and/or equipment. Any request for trouble diagnosis or problem resolution found not to be the fault of Smart City Networks (such as faulty equipment or damaged cable) may be billed to the exhibitor at the prevailing labor rate.

### HOW MUCH BANDWIDTH DO I NEED?

To identify how much bandwidth you should require, please reach out to a technical representative in your organization, review your program specifications listed with any demonstrations or downloads you plan to run.

### WHAT DOES SD, HD, AND UHD STAND FOR?

SD, HD, and UHD are the abbreviated names of three video streaming formats. The basic difference between each of the formats is the number of pixels comprising the video image. The greater the pixel count the sharper and more detailed your video will be.

FORMAT	RESOLUTION	BANDWIDTH REQUIRED
Standard Definition (SD)	720x480	3.0-5.0 Mbps
High Definition (HD)	1280x720 & 1920x1080	5.0-8.0 Mbps
Ultra High Definition (UHD)	3840x2160	25 Mbps

## Our Promise ★★★★★

Smart City Networks is "Where Technology Meets Hospitality". By anticipating and responding to our clients' needs, we continue to lead the nation in providing quality advanced technology and telecommunication solutions to the trade show and event industry. We work to build personal relationships with our clients because excellent service requires an exceptional and long-lasting commitment.

**"IN A HECTIC WORLD, WE PROVIDE PEACE OF MIND."**



# ON-SITE WIRELESS SERVICES

## LOS ANGELES CONVENTION CENTER

### NEED WIRELESS CONNECTIVITY?

Smart City Networks offers on-site wireless services for both attendees and exhibitors. Our **Complimentary Internet** is offered free of charge and is available in all public spaces and meeting rooms. Our **Exhibitor Internet** is available facility-wide on a 5 GHz wireless network, at speeds of 3 Mbps up/down per device. Depending on where you are in the facility, you may see both SSIDs (network names), but only Exhibitor Internet is supported in all areas.

#### EXHIBITOR INTERNET

Exhibitor Internet is available throughout the facility. Each purchase is device specific.

**1 day for \$79.99**  
**3 days for \$227.97**  
**5 days for \$359.95**

#### HOW TO CONNECT TO EXHIBITOR INTERNET

1. Open Wi-Fi settings on your device and select "Exhibitor Internet".
2. First time users will be asked to create an account and select a purchase option.
3. Follow the on-screen instructions to get connected.

#### COMPLIMENTARY INTERNET

Complimentary Internet is a free service and is available for use in all public spaces and meeting rooms.

#### HOW TO CONNECT TO COMPLIMENTARY INTERNET

1. Open Wi-Fi settings on your device and select "Free Internet".
2. First time users will be asked to create an account and verify their email address to get connected.

For questions regarding on-site wireless services, please call Smart City Networks at 213-765-4647. To order any other services we provide, please visit us online at: [orders.smartcitynetworks.com](http://orders.smartcitynetworks.com).

